

CAPITAL



M/T AMORE MIO M/T ANDROKLIS M/T ARISTODIMOS

BUILT: 2006

CLASS: LRS

FLAG: MARSHALL ISLANDS



BUILDER: Samsung Heavy Industries Co Ltd, S.Korea

VESSEL PARTICULARS

Type of vessel:	*100A1 Double Hull Tanker, ESP, ShipRight(SDA,FDA,CM), *IWS, LI, Ice Class 1A FS, *LMC, IGS, UMS, CCS, NAV1, IBS, COW(LR), ETA, Green Passport, Part Higher Tensile Steel, PL(LR), SBT(LR), ShipRight(BWMP (S), ES + 1(Within 0.4L), PCWBT (05/2010), SERS, MCM, MPMS, SCM)
IMO No:	9297371
Summer deadweight:	113.553 MT
Summer draft:	15.04 m
Summer freeboard:	6.319 m
GRT / NRT:	63.462 / 34.210
LOA:	251.51m
Beam:	43.8 m
Depth:	21.3 m
Keel to mast:	48.22 m

CARGO ARRANGEMENTS

Cargo / slop tanks:	12 / 2
Cargo capacity (98% ex slop tanks):	121.270,2 m ³
Slop tank capacity (98%):	3712,8 m ³
Cargo tank coating:	Epoxy bottom up to 0.6m up and Top down to 1.6m
Heating arrangement:	Steam - heating coils
COW:	Yes
Number of manifolds on each side:	3 x 400 mm
Distance bow to mid-point manifold:	127.15 m
Distance main deck to center manifold:	1.825 m
Distance manifolds to ship's rail:	4,450 mm
Natural segregation with double valves:	3
Cranes/SWL:	1 x 15 T

CARGO PUMPS

Cargo pump type(s):	Centrifugal
Number of cargo pumps:	3
Capacity of cargo pumps:	3 x 2800 m ³ / h

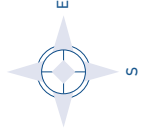
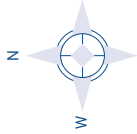
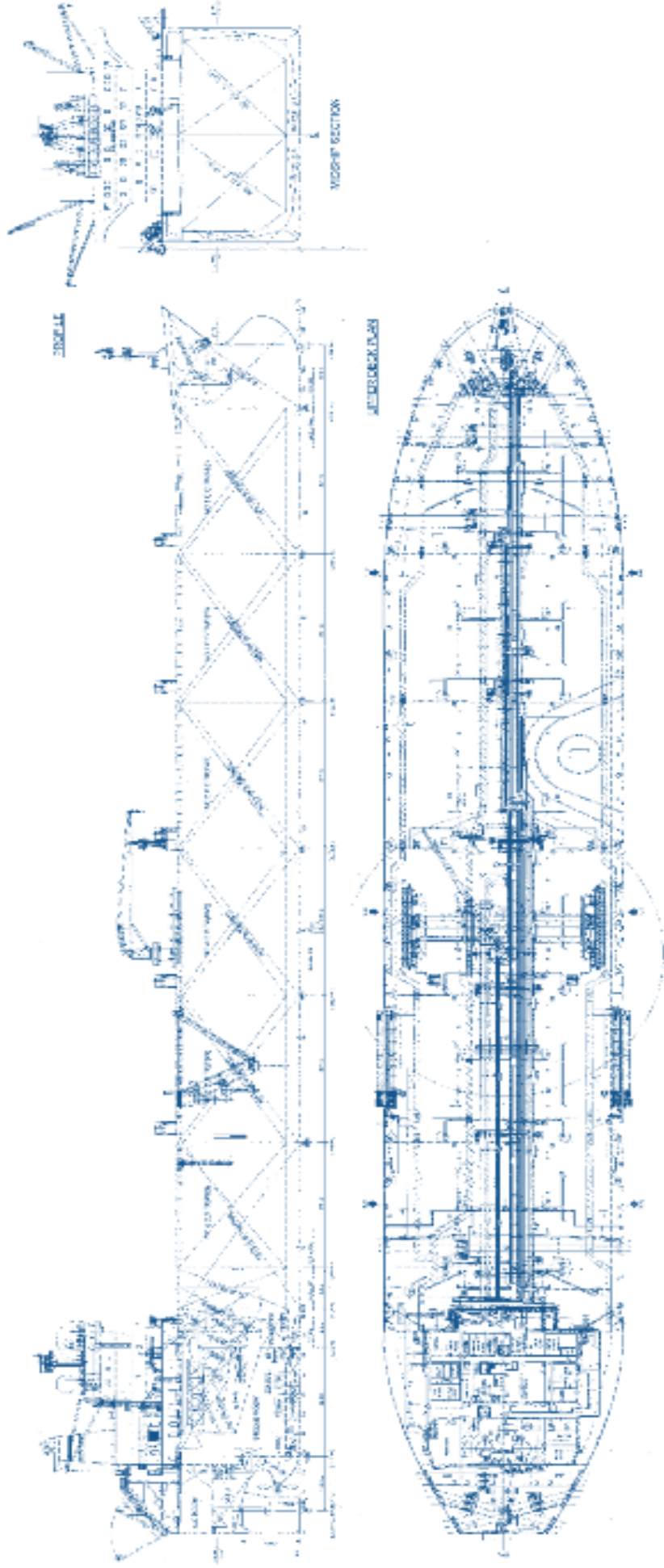
PROPULSION

Main engine:	HYUNDAI MAN B&W 7560 MC-C 15820 KW at 108 rpm
Propeller type:	solid screw
Endurance:	
Generators:	3 x 960 kW HYUNDAI STX-MAN B&W 6L23/30H
Bow thruster:	No

ALL DETAILS ABOUT

CAPITAL

SHIP MANAGEMENT CORP



M/T AMORE MIO M/T ANDROKLIS M/T ARISTODIMOS

3, Iassonos St., Piraeus 185 37, GREECE
Tel: +30 210 4584900, Fax: +30 210 4285679
e-mail: info@capitalship.gr - www.capitalship.gr