

# CAPITAL



## M/T ALKIMOS

**BUILT:** 2015

**BUILDER:** Fujian Shenglong Shipyard, China

**CLASS:** BV

**FLAG:** MALTA



### VESSEL PARTICULARS

|                    |  |
|--------------------|--|
| Type of vessel:    | OIL TANKER ESP, CHEMICAL TANKER ESP IMO TYPE 2, UNRESTRICTED NAVIGATION +MON-SHAFT |
| Summer deadweight: | 13,953 MTS   |
| Summer draft:      | 7.94 m   |
| Summer freeboard:  | 2.875 m  |
| GRT / NRT:         | 9366 / 4626  |
| LOA:               | 146.00 m   |
| Beam:              | 22.00 m  |
| Depth:             | 10.80 m  |
| Keel to mast:      | 36.20 m  |



### CARGO ARRANGEMENTS

|  |                               |
|--|-------------------------------|
| Cargo / slop tanks:                    | 12 / 2                        |
| Cargo capacity (98% ex slop tanks):    | 15,795.424 m <sup>3</sup>     |
| Slop tank capacity (98%):              | 533.845 m <sup>3</sup>        |
| Cargo tank coating:                    | Phenolic epoxy                |
| Heating arrangement:                   | Stainless Steel heating coils |
| Number of manifolds on each side:      | 7                             |
| Distance bow to mid-point manifold:    | 65.20 m                       |
| Distance main deck to center manifold: | 1,800 mm                      |
| Distance manifolds to ship's rail:     | 4,935 mm                      |
| Cranes / SWL:                          | 1 x 5 T                       |



### CARGO PUMPS

|                          |                             |
|--------------------------|-----------------------------|
| Cargo pump type:         | ELECTRICAL, SCREW TYPE      |
| Number of cargo pumps:   | 4                           |
| Capacity of cargo pumps: | 4 x 400 m <sup>3</sup> / hr |

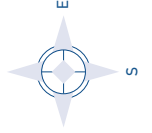
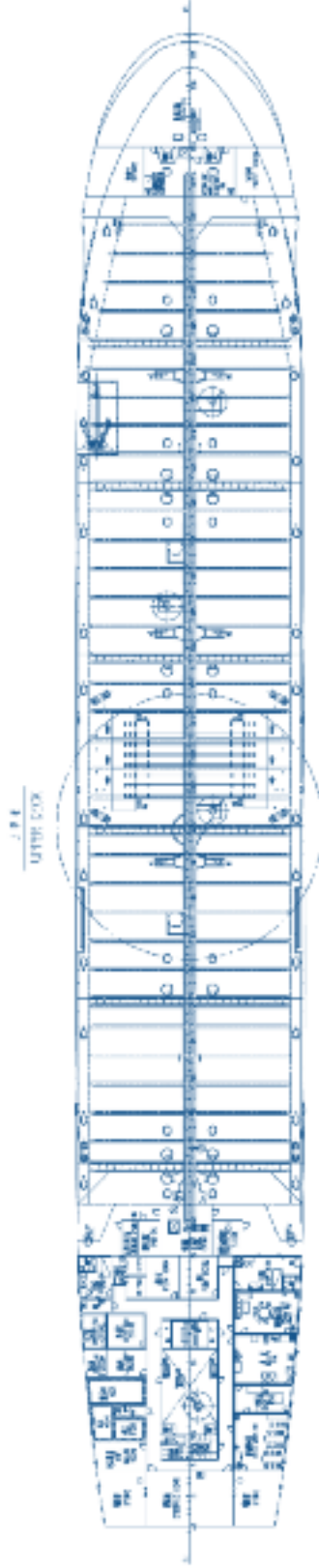
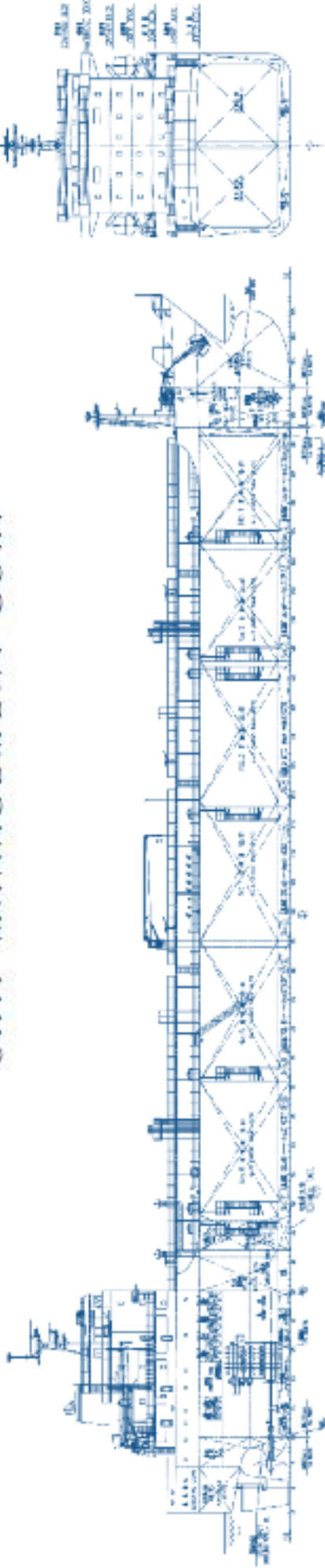
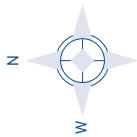
### PROPULSION

|                    |                                       |
|--------------------|---------------------------------------|
| Main engine:       | YMD MAN B&W 6S35MC 4440 KW @ 173 RPM  |
| Diesel generators: | 3 x DAIHATSU 6DC-17 400 kW @ 1000 RPM |

ALL DETAILS ABOUT

# CAPITAL

SHIP MANAGEMENT CORP



## M/T ALKIMOS

3, Iassonos St., Piraeus 185 37, GREECE  
Tel: +30 210 4584900, Fax: +30 210 4285679  
e-mail: [info@capitalship.gr](mailto:info@capitalship.gr) - [www.capitalship.gr](http://www.capitalship.gr)