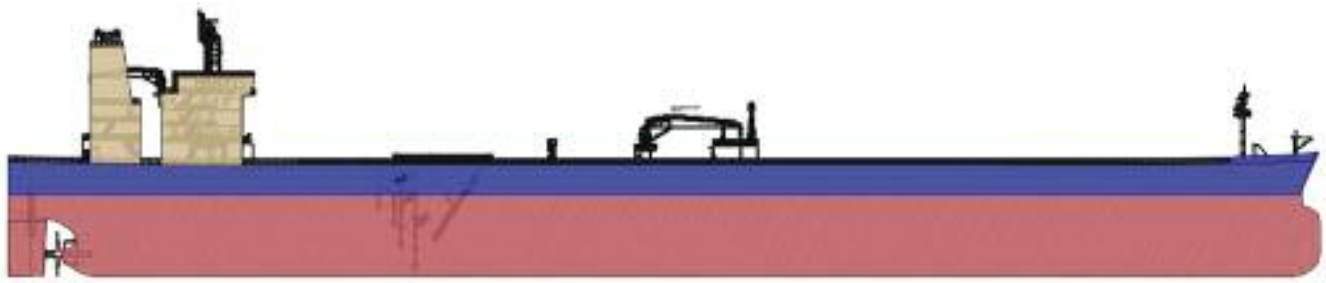


CAPITAL



ARISTOFANIS AITOLOS

BUILT: JAN & FEB 2020

BUILDER: Daehan Shipbuilding Co., Ltd.

CLASS: LRS

FLAG: MALTA



VESSEL PARTICULARS

Type of vessel:	Crude Oil Aframax Tanker
Summer deadweight:	114,380 mt
Summer draft:	15.2 m
Summer freeboard:	6,02 m
GRT / NRT:	60751,00/35896,00
LOA:	249.9 m
Beam:	44 m
Depth:	21.2 m
Keel to mast:	49.5 m

CARGO ARRANGEMENTS

Cargo / slop tanks:	12 + 2
Cargo capacity (98% ex slop tanks):	129,800 m3 (100%)
Slop tank capacity (98%):	2,800 m3 (100%)
Cargo tank coating:	2 x Epoxy (delete this field perhaps)
Heating arrangement:	heating coils
SBT / IGS / COW:	YES (not much detail in the spec except for COW to comply with MARPOL 73/78)
Number of manifolds on each side:	3
Natural segregation with double valves:	3
Cranes / SWL:	2 x 15 mt cargo hose handling + Provision Cranes 1 x 4 mt + 2 x mt

CARGO PUMPS

Cargo pump type:	Centrifugal, steam turbine driven
Number of cargo pumps:	3
Capacity of cargo pumps:	3,000 m/h

PROPULSION

Main engine:	MAN B&W 6G60ME-C9.5 x 1 set
Propeller type:	Fixed pitch, keyless, right-hand rotating (Nickel aluminum bronze)
Generators:	3 x 960kW @ 900 rpm (pocket plan conflicts with spec)
Bow thruster:	Not applicable (delete this field)
Scrubber:	PANASIA, Open-loop, U-type, multi inlet
BWTS:	Electrolysis and filtration system, USCG approved & VGP compliant (not only AMS accepted).

(Outline spec states electrolysis type whereas Full spec states Ozonation type)

Total capacity: 3,600 m3/h x 1 unit

Cruising range: 18,500 nautical miles

Energy Saving Device: Propeller duct / Rudder bulb

Makers List consisting almost entirely of Korean/Japanese/European.

ALL DETAILS ABOUT

