

CAPITAL



M/T APOLLONAS M/T ATROMITOS

BUILT: 2016

CLASS: LRS

FLAG: MARSHALL ISLANDS



BUILDER: Daewoo Shipbuilding & Marine Engineering Co. Ltd.

VESSEL PARTICULARS

| | |
|--------------------|---|
| Type of vessel: | CRUDE OIL TANKER, +100a1, Double hull, Oil Tanker, CSR, ESP, SHIPRIGHT (CM, ACS (B, C)), IWS, LI, DSPM4, ECO (BWT(IHM, P, VECSL), MACHINERY+LMC, IGS, UMS, NAV1, ETA, COW(LR) |
| Summer deadweight: | 299,999 MT |
| Summer draft: | 21.54 m |
| Summer freeboard: | 7.99 m |
| GRT / NRT: | 157,169 / 127,546 |
| LOA: | 336 m |
| Beam: | 60.00 m |
| Depth: | 29.5 m |

CARGO ARRANGEMENTS

| | |
|---|----------------------------------|
| Cargo / slop tanks: | 15 / 2 |
| Cargo capacity (98% ex slop tanks): | 325,764.00 m ³ |
| Slop tank capacity (98%): | 9,709.80 m ³ |
| Cargo tank coating: | Epoxy |
| Heating arrangement: | Aluminized - brass heating coils |
| SBT / IGS / COW: | Yes |
| Number of manifolds on each side: | 3 x 400 mm |
| Distance bow to mid-point manifold: | 165.10 m |
| Distance main deck to center manifold: | 2,100 mm |
| Distance manifolds to ship's rail: | 4,600 mm |
| Natural segregation with double valves: | 3 |
| Cranes / SWL: | 2 x 20 T |



CARGO PUMPS

| | |
|--------------------------|------------------------------|
| Cargo pump type: | Centrifugal |
| Number of cargo pumps: | 3 |
| Capacity of cargo pumps: | 3 x 5,500 m ³ / h |

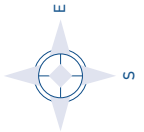
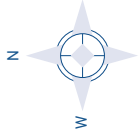
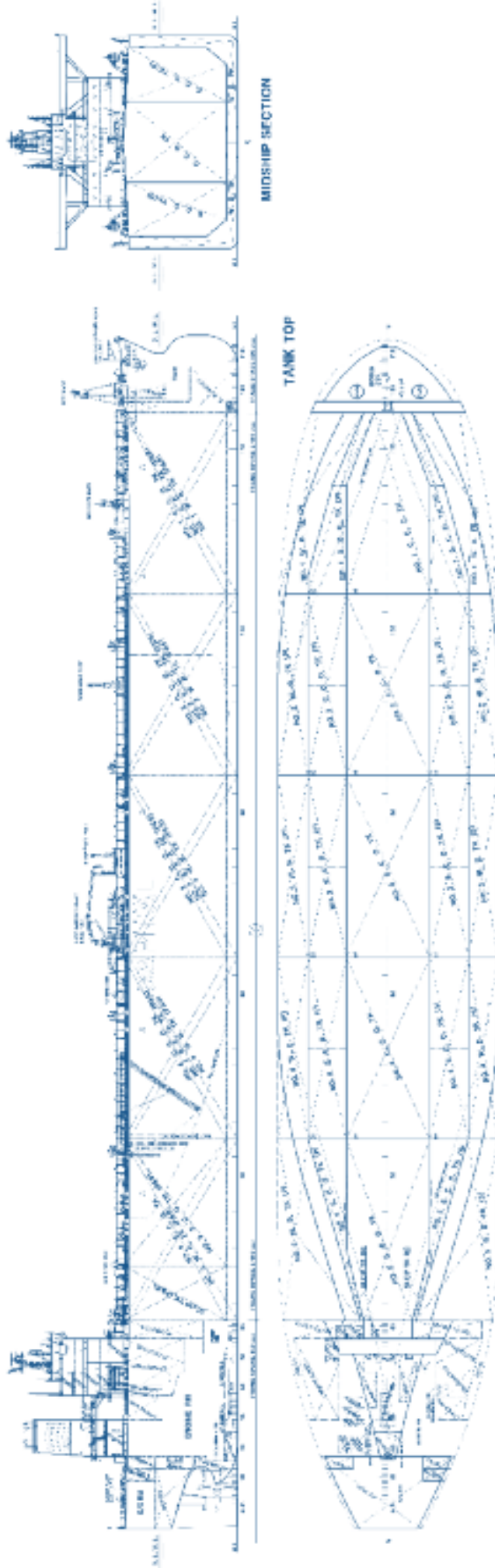
PROPULSION

| | |
|-----------------|---|
| Main engine: | DOOSAN MAN B&W 7G 80 ME- C 9,2 24.360 kW @ 65.0 RPM |
| Propeller type: | Fixed pitch |
| Generators: | 900 RPM |
| Bow thruster: | N/A |

ALL DETAILS ABOUT



SHIP MANAGEMENT CORP



M/T APOLLONAS M/T ATROMITOS

3, Iassonos St., Piraeus 185 37, GREECE
Tel: +30 210 4584900, Fax: +30 210 4285679
e-mail: info@capitalship.gr - www.capitalship.gr