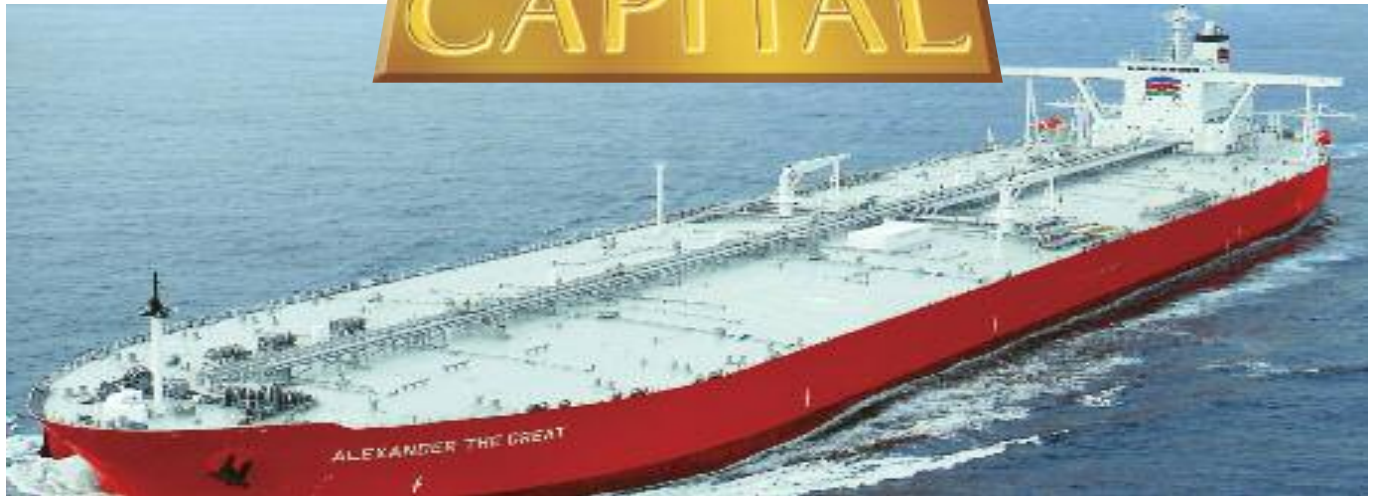


CAPITAL



M/T ALEXANDER THE GREAT M/T ACHILLEAS

BUILT: 2010

CLASS: ABS

FLAG: LIBERIA



BUILDER: Ariake Shipyard, Universal Shipbuilding Corporation, Japan

VESSEL PARTICULARS

Type of vessel:	CRUDE OIL TANKER, ABS A1 E, AMS ACCU SH, SHCM ESP UWILD AND VEC
Summer deadweight:	297,950 MT
Summer draft:	21.523 m
Summer freeboard:	8.221 m
GRT / NRT:	156,915/ 98,886
LOA:	330 m
Beam:	60.00 m
Depth:	29.7 m
Keel to mast:	65.53 m



CARGO ARRANGEMENTS

Cargo / slop tanks:	15 / 2
Cargo capacity (98% ex slop tanks):	340,000.00 m ³
Slop tank capacity (98%):	8,704 m ³
Cargo tank coating:	Epoxy
Heating arrangement:	Aluminized - brass heating coils
SBT / IGS / COW:	Yes
Number of manifolds on each side:	3 x 400 mm
Distance bow to mid-point manifold:	162.08 m
Distance main deck to center manifold:	2,100 mm
Distance manifolds to ship's rail:	4,600 mm
Natural segregation with double valves:	3
Cranes / SWL:	2 x 20 T



CARGO PUMPS

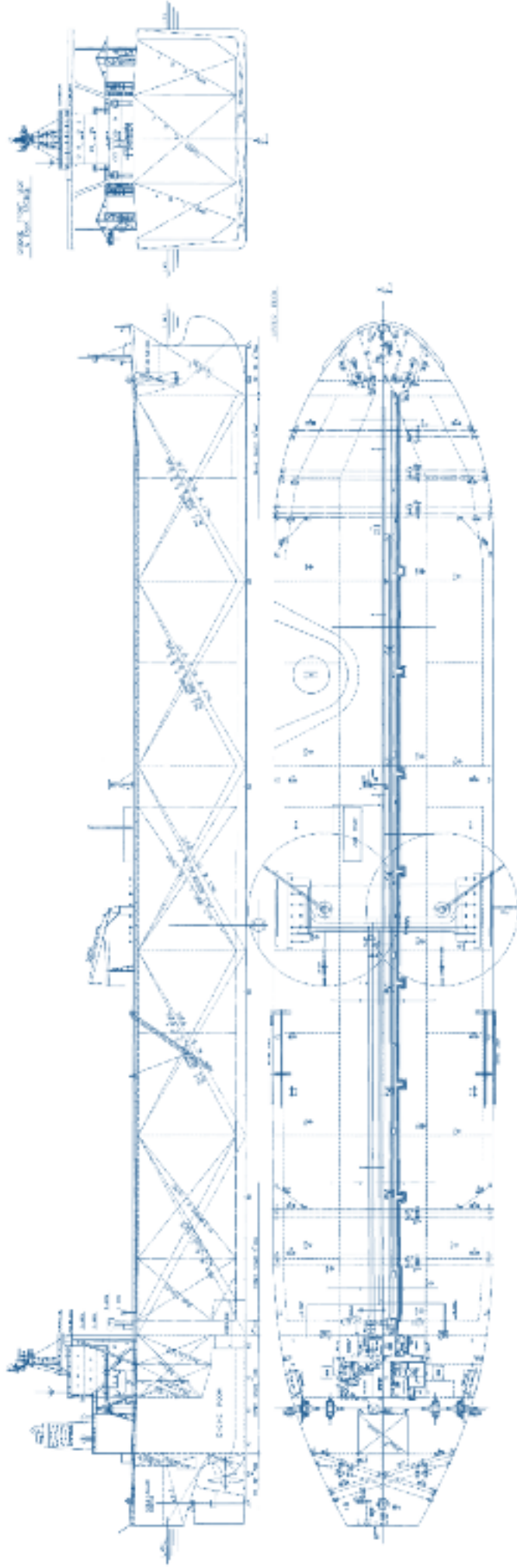
Cargo pump type:	Centrifugal
Number of cargo pumps:	3
Capacity of cargo pumps:	3 x 5,500 m ³ / h



PROPULSION

Main engine:	MAN B&W 7S80MC 25,090 kW @ 78.6 RPM
Propeller type:	Fixed pitch
Generators:	900 RPM
Bow thruster:	N/A

ALL DETAILS ABOUT



M/T ALEXANDER THE GREAT M/T ACHILLEAS

3, Iassonos St., Piraeus 185 37, GREECE
Tel: +30 210 4584900, Fax: +30 210 4285679
e-mail: info@capitalship.gr - www.capitalship.gr

