

# CAPITAL



## ARISTOFANIS AITOLOS

**BUILT:** Jan 2020

**CLASS:** LRS

**FLAG:** MARSHALL ISLANDS



**BUILDER:** Daehan Shipbuilding Co., Ltd.

### VESSEL PARTICULARS

Type of vessel:	Crude Oil Tanker
Summer deadweight:	115521,00 mt
Summer draft:	15,22 m
Summer freeboard:	6,02 m
GRT / NRT:	62826,00 / 36056,00
LOA:	249,90 m
Beam:	44,04 m
Depth:	21,20 m
Keel to mast:	49,50 m

### CARGO ARRANGEMENTS

Cargo / slop tanks:	12 + 2
Cargo capacity (98% ex slop tanks):	129,800 m3 (100%)
Slop tank capacity (98%):	2,800 m3 (100%)
Cargo tank coating:	2 x Epoxy (delete this field perhaps)
Heating arrangement:	heating coils
SBT / IGS / COW:	YES (not much detail in the spec except for COW to comply with MARPOL 73/78)
Number of manifolds on each side:	3
Natural segregation with double valves:	3
Cranes / SWL:	2 x 15 mt cargo hose handling + Provision Cranes 1 x 4 mt + 2 x mt

### CARGO PUMPS

Cargo pump type:	Centrifugal, steam turbine driven
Number of cargo pumps:	3
Capacity of cargo pumps:	3,000 m/h

### PROPULSION

Main engine:	MAN B&W 6G60ME-C9.5 x 1 set
Propeller type:	Fixed pitch, keyless, right-hand rotating (Nickel aluminum bronze)
Generators:	3 x 960kW @ 900 rpm (pocket plan conflicts with spec)
Bow thruster:	Not applicable (delete this field)
Scrubber:	PANASIA, Open-loop, U-type, multi inlet
BWTS:	Electrolysis and filtration system, USCG approved & VGP compliant (not only AMS accepted).

(Outline spec states electrolysis type whereas Full spec states Ozonation type)

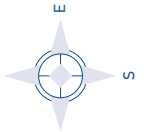
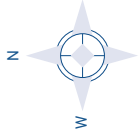
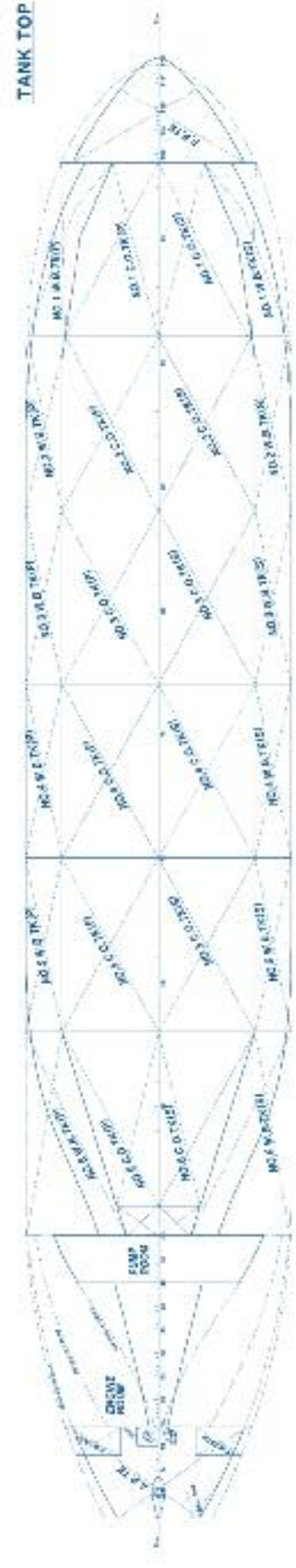
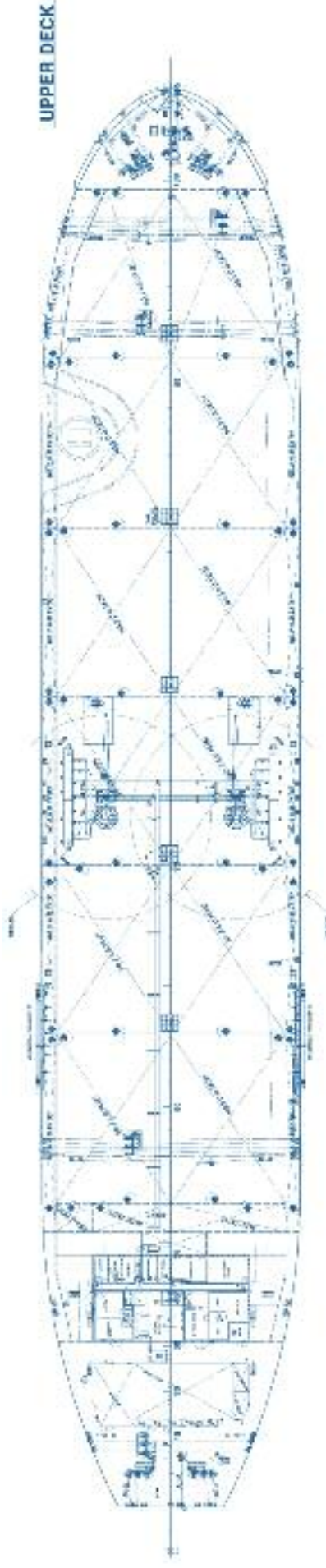
Total capacity:	3,600 m3/h x 1 unit
Cruising range:	18,500 nautical miles
Energy Saving Device:	Propeller duct / Rudder bulb

Makers List consisting almost entirely of Korean/Japanese/European.

ALL DETAILS ABOUT

# CAPITAL

SHIP MANAGEMENT CORP



## ARISTOFANIS AITOLOS

3, Iassonos St., Piraeus 185 37, GREECE  
Tel: +30 210 4584900, Fax: +30 210 4285679  
e-mail: [info@capitalship.gr](mailto:info@capitalship.gr) - [www.capitalship.gr](http://www.capitalship.gr)