

CAPITAL



ALFRED ADAM ALEXANDER ALBERT

BUILT: 2018, 2019

CLASS: ABS, DNV/GL

FLAG: LIBERIA



BUILDER: Hyundai Samho Heavy Industries Co. Ltd., South Korea

VESSEL PARTICULARS

Type of vessel:	+1A1 Tanker for Oil, ESP, CSR, SPM, Ice (1B) BIS, BMON, TMON, BWM(T), CCO, Clean (design, Tier III) E0, Gas Fuelled, NAUT (AW) VCS(2), Recyclable, COAT-PSPC (B,C) COMF,(C-2) ECA(SOx-A), LCS
Summer deadweight:	136,724 MTS
Summer draft:	15.020 m
Summer freeboard:	6.121 m
GRT / NRT:	64909 / 35359
LOA:	249.99 m
Beam:	44.00 m
Depth:	21.10 m
Keel to mast:	53.21 m

CARGO ARRANGEMENTS

Cargo / slop tanks:	12 / 2
Cargo capacity (98% ex slop tanks):	185,963.7 m ³
Slop tank capacity (98%):	2,646 m ³
Cargo tank coating:	Epoxy
Heating arrangement:	Tanks Mild Steel / Slops Steel with anticorrosion coating
SBT / IGS / COW:	Yes
Number of manifolds on each side:	3 x 406.40 mm
Distance bow to mid-point manifold:	123.70 m
Distance main deck to center manifold:	2,100 mm
Distance manifolds to ship's rail:	4,600 mm
Natural segregation with double valves:	3
Cranes / SWL:	2 x 15 T

CARGO PUMPS

Cargo pump type:	Centrifugal
Number of cargo pumps:	3
Capacity of cargo pumps:	3 x 5,500 m ³ / h

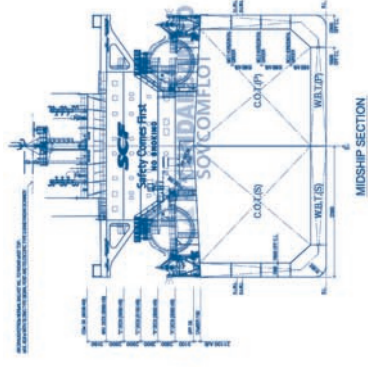
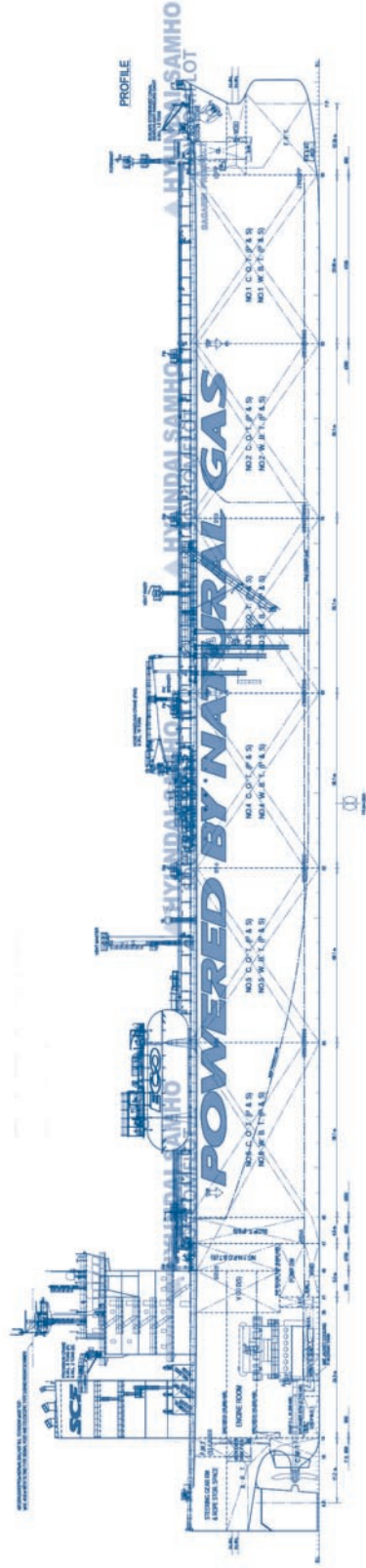
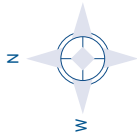
PROPULSION

Main engine:	HYUNDAI-WIN GD W7X62DF-TIII 13,778 kW
Propeller type:	Fixed pitch
Generators:	3 x 1,480 kW
Bow thruster:	N/A

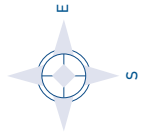
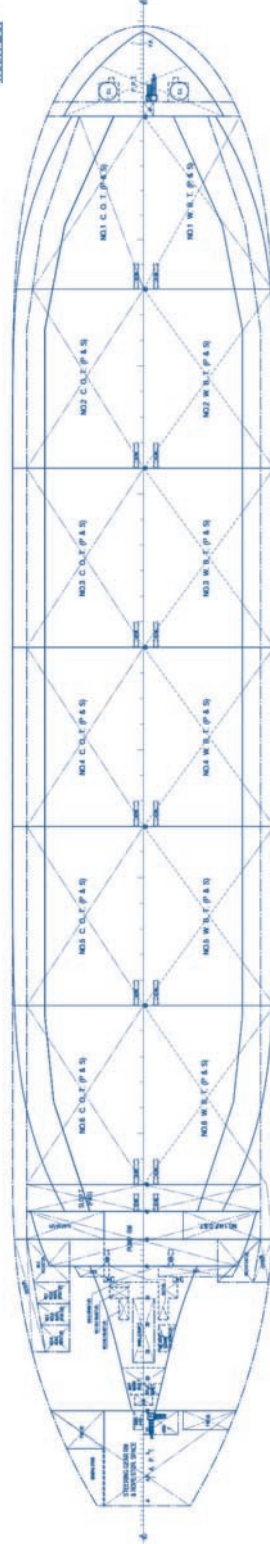
ALL DETAILS ABOUT

CAPITAL

SHIP MANAGEMENT CORP



TANK PLAN



ALFRED ADAM ALEXANDER ALBERT

3, Iassonos St., Piraeus 185 37, GREECE

Tel: +30 210 4584900

e-mail: info@capitalship.gr - www.capitalship.gr