

# CAPITAL



**M/T AGISILAOS    M/T AIOLOS    M/T AKTORAS    M/T ALKIVIADIS**  
**M/T ARIONAS    M/T ARISTIDIS    M/T ATLANTAS II**

**BUILT:** 2006-2007

**CLASS:** ABS/LRS

**FLAG:** MARSHALL ISLANDS



**BUILDER:** Hyundai Mipo Dockyard Company, Ltd - S. Korea

## VESSEL PARTICULARS

Type of vessel:	ICE CLASS IA OIL, PRODUCT & CHEMICAL TANKER, IMO II/III
Summer deadweight:	37,000 MT
Summer draft:	11.316 m
Summer freeboard:	5.913 m
GRT / NRT	23,270 / 9,925
LOA:	184.22 m
Beam:	27.4 m
Depth:	17.2 m
Keel to mast:	45.51 m



## CARGO ARRANGEMENTS

Cargo / slop tanks:	12/2
Cargo capacity (98% ex slop tanks):	40,600 m <sup>3</sup>
Slop tank capacity (98%):	1,034 m <sup>3</sup>
Cargo tank coating:	Phenolic epoxy
Heating arrangement:	12 units heat exchangers SUS 316L cargo tanks heating coils SUS 316L slop tanks
SBT / IGS / COW:	Yes
Number of manifolds on each side:	6 x 12" cargo + 2 x 8" slop
Distance bow to mid-point manifold:	92.63 m
Distance main deck to center manifold:	1,940 mm
Distance manifolds to ship's rail:	4,600 mm
Natural segregation with double valves:	6 + 1
Cranes / SWL:	1 x 10 T



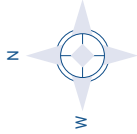
## CARGO PUMPS

Cargo pump type:	Hydraulic driven, submerged centrifugal Framo pumps
Number of cargo pumps:	10+2+2
Capacity of cargo pumps:	10 x 500 m <sup>3</sup> / hr, 2 x 300 m <sup>3</sup> / hr, 2 x 150 m <sup>3</sup> / hr

## PROPULSION

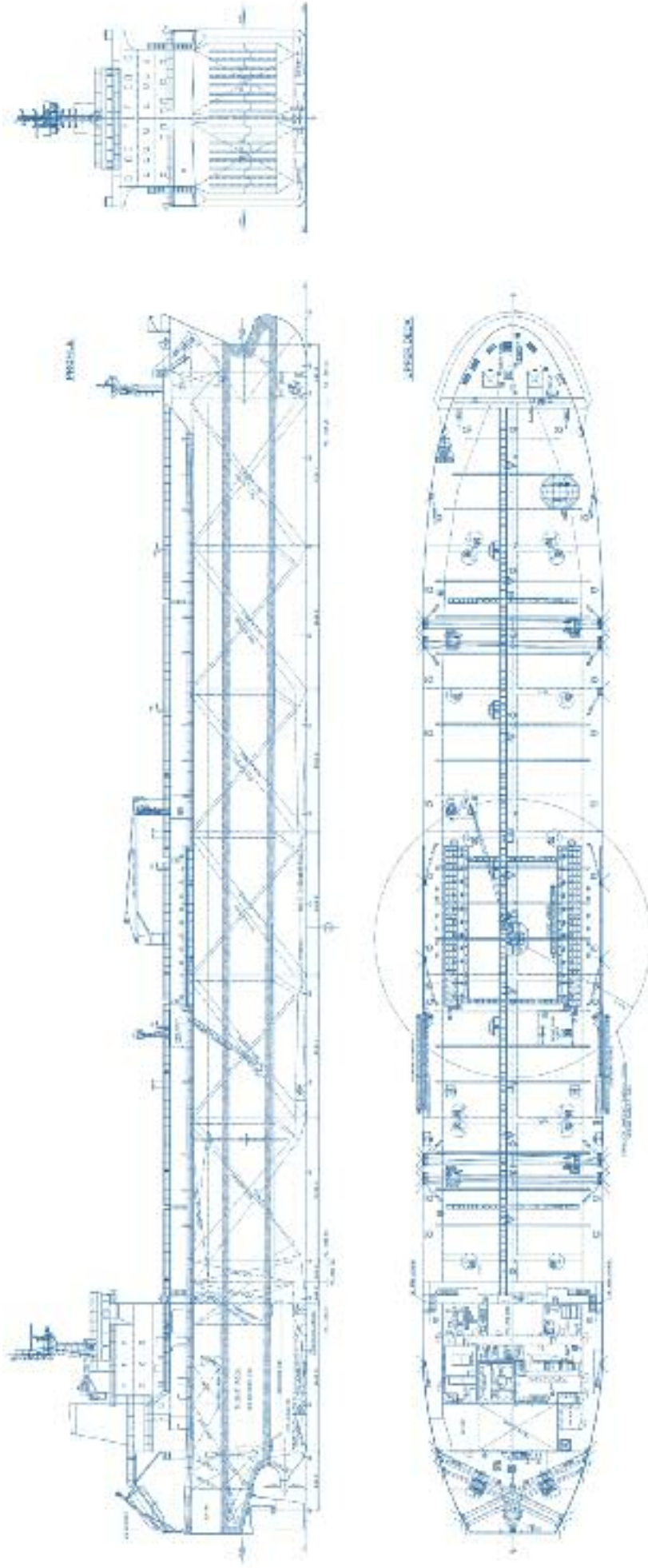
Main engine:	HYUNDAI B&W 6550MC-C, MCR 12,900 bhp @ 127 RPM, or Wartsila Sulzer RTFlex 50
Propeller type:	Fixed pitch
Generators:	800 kW x 1 set, 960 kW x 2 sets
Bow thruster:	Yes (1 x 900 kW)

ALL DETAILS ABOUT

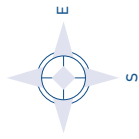


# CAPITAL

SHIP MANAGEMENT CORP



**M/T AGISILAOS M/T AIOLOS M/T AKTORAS M/T ALKIVIADIS**  
**M/T ARIONAS M/T ARISTIDIS M/T ATLANTAS II**



3, Iassonos St., Piraeus 185 37, GREECE  
Tel: +30 210 4584900, Fax: +30 210 4285679  
e-mail: [info@capitalship.gr](mailto:info@capitalship.gr) - [www.capitalship.gr](http://www.capitalship.gr)