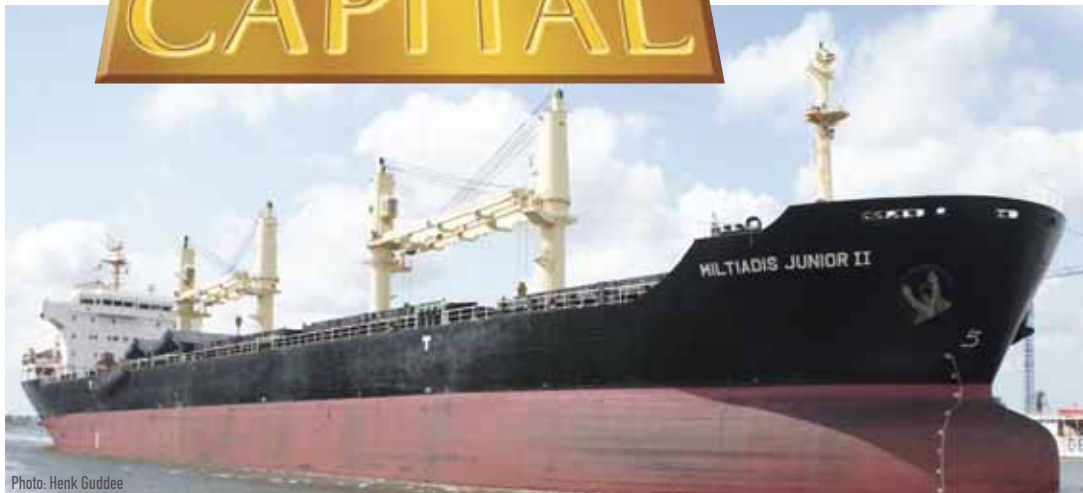


# CAPITAL



## M/V APOSTOLOS II

## M/V MILTIADIS JUNIOR II

**BUILT:** 2003

**CLASS:** ABS

**FLAG:** BAHAMAS



**BUILDER:** Tianjin Xingang Shipbuilding Heavy Industry Co., Ltd - China

### VESSEL MAIN PARTICULARS

Type of vessel:	BULK CARRIER, DOUBLE HULL
Summer deadweight:	34,680 MT
Summer draft:	10.65 m
LOA:	179.28 m
Beam:	28 m
GT / NT:	22,072 / 11,132
Grain capacity:	44,021 m <sup>3</sup>
Bale capacity:	42,723 m <sup>3</sup>
TPC at summer draft:	44

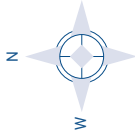


### CARGO ARRANGEMENT

Cargo holds / hatches:	5 holds / 5 hatches strengthened for heavy cargoes with alternate hold loading. Holds No2 and No4 may be empty when other full
Australian hold ladder:	Fitted in all holds
CO <sub>2</sub> :	Fitted in all holds
El. Ventilation:	Fitted in all holds. Fans (6 air changes per hour)
Cargo holds corrosion protection:	Modified epoxy paint
Cranes/SWL:	4 x 30 T
Grabs / capacity:	3 sets of electro-hydraulic type of 8m <sup>3</sup> capacity each
Tank top strength:	23 MT / m <sup>2</sup>
Hatch dimensions:	No 1&5: 20.0 m x 14.0 m, No 2-3-4: 20.8m x 19.6 m
Hold dimensions:	L X W on tanktop x Hmax height from tanktop to underside of the deck beams: No 1: 25.60 m x FWD 10.64 m/MID 19.48/AFT 22.08 m x 13.42 m No 2,3,4: 24.70 m x FWD 22.08 m x 13.42 No 5: 24.70 m x FWD 22.08 m/MID 19.42m/AFT 12.20 m x 13.42 m

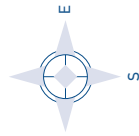
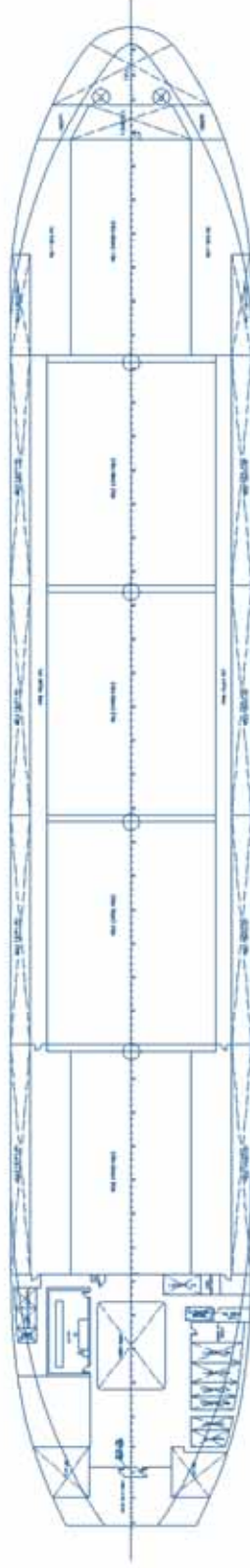
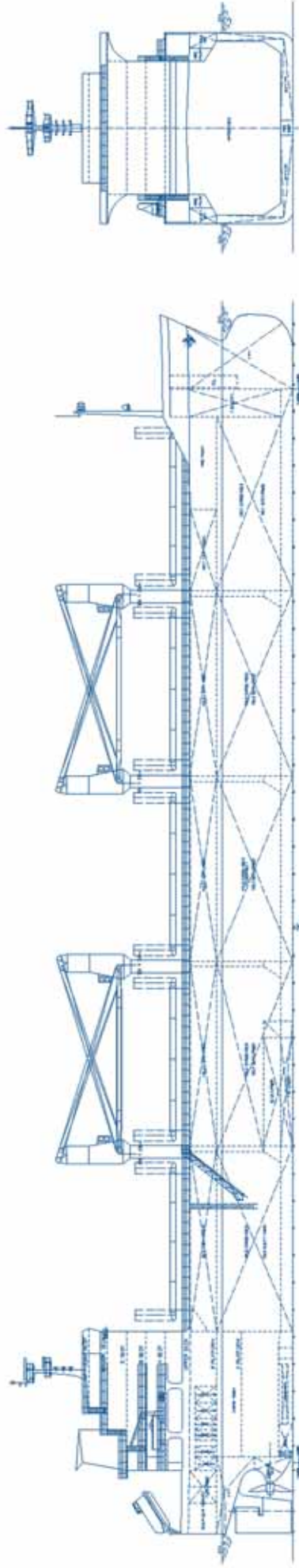
### PROPULSION

Main engine:	(YICHANG DIESEL ENGINE CO) SULZER 6RTA48T-B MCR 7650 kW @116.3 RPM
Propeller type:	Fixed pitch propeller
Generators:	Taiyo Electric Co. 3 x 560 kW



# CAPITAL

SHIP MANAGEMENT CORP



## M/V APOSTOLOS II    M/V MILTIADIS JUNIOR II

3, Iassonos St., Piraeus 185 37, GREECE  
Tel: +30 210 4584900, Fax: +30 210 4285679  
e-mail: [info@capitalship.gr](mailto:info@capitalship.gr) - [www.capitalship.gr](http://www.capitalship.gr)