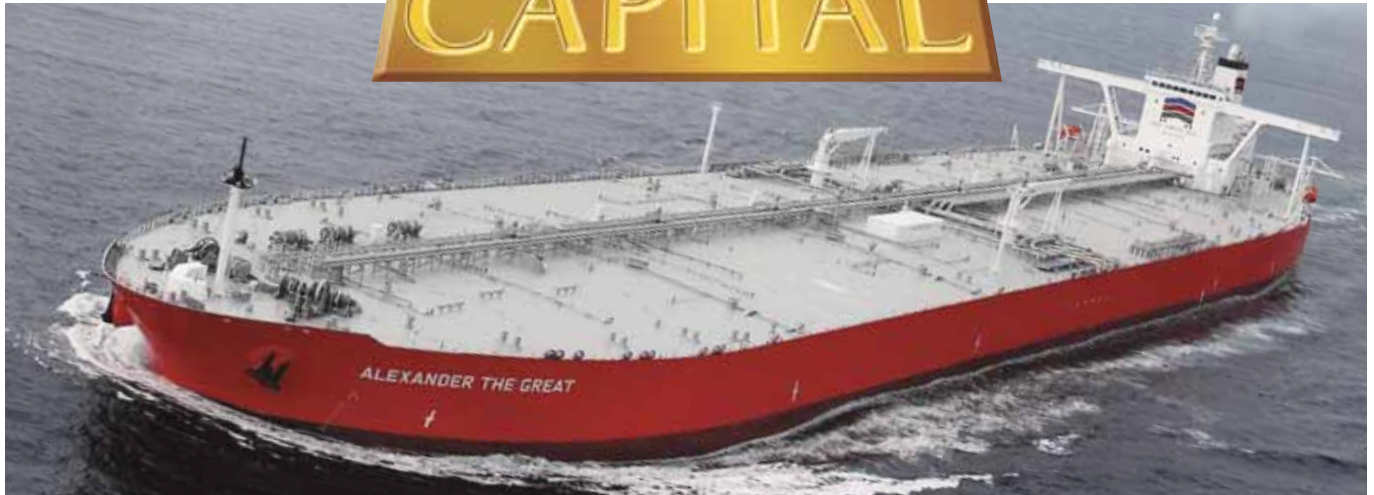


# CAPITAL



## M/T ALEXANDER THE GREAT      M/T ACHILLEAS

**BUILT:** 2010

**CLASS:** ABS

**FLAG:** LIBERIA



**BUILDER:** Ariake Shipyard, Universal Shipbuilding Corporation, Japan

### VESSEL PARTICULARS

|                    |  |
|--------------------|--|
| Type of vessel:    | CRUDE OIL TANKER, ABS A1 E, AMS ACCU SH, SHCM ESP<br>UWILD AND VEC |
| Summer deadweight: | 297,950 MT   |
| Summer draft:      | 21.523 m   |
| Summer freeboard:  | 8.221 m  |
| GRT / NRT:         | 156,915/ 98,886  |
| LOA:               | 330 m  |
| Beam:              | 60.00 m  |
| Depth:             | 29.7 m   |
| Keel to mast:      | 65.53 m  |



### CARGO ARRANGEMENTS

|   |                                  |
|---|----------------------------------|
| Cargo / slop tanks:                     | 15 / 2                           |
| Cargo capacity (98% ex slop tanks):     | 340,000.00 m <sup>3</sup>        |
| Slop tank capacity (98%):               | 8,704 m <sup>3</sup>             |
| Cargo tank coating:                     | Epoxy                            |
| Heating arrangement:                    | Aluminized - brass heating coils |
| SBT / IGS / COW:                        | Yes                              |
| Number of manifolds on each side:       | 3 x 400 mm                       |
| Distance bow to mid-point manifold:     | 162.08 m                         |
| Distance main deck to center manifold:  | 2,100 mm                         |
| Distance manifolds to ship's rail:      | 4,600 mm                         |
| Natural segregation with double valves: | 3                                |
| Cranes/SWL:                             | 2 x 20 T                         |



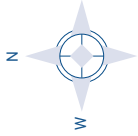
### CARGO PUMPS

|                          |                              |
|--------------------------|------------------------------|
| Cargo pump type:         | Centrifugal                  |
| Number of cargo pumps:   | 3                            |
| Capacity of cargo pumps: | 3 x 5,500 m <sup>3</sup> / h |



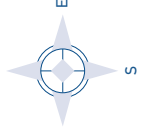
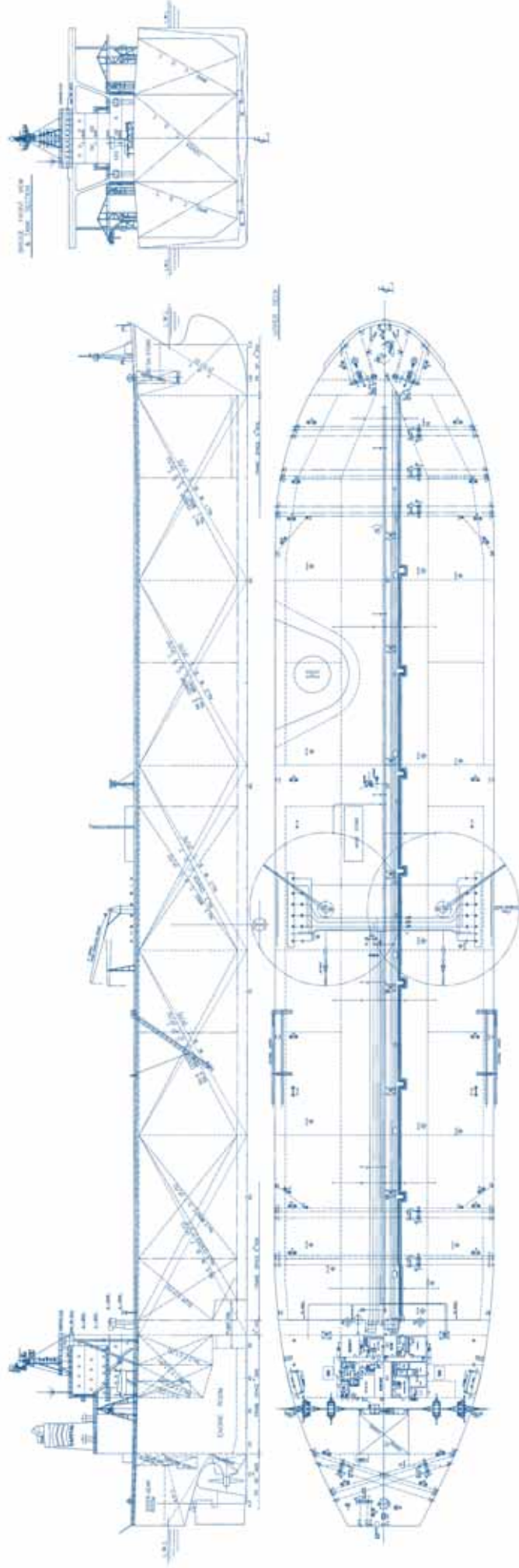
### PROPULSION

|                 |                                     |
|-----------------|-------------------------------------|
| Main engine:    | MAN B&W 7S80MC 25,090 kW @ 78.6 RPM |
| Propeller type: | Fixed pitch                         |
| Generators:     | 3 x 1,025 kW @ 900 RPM              |



# CAPITAL

SHIP MANAGEMENT CORP



## M/T ALEXANDER THE GREAT M/T ACHILLEAS

3, Iassonos St., Piraeus 185 37, GREECE  
Tel: +30 210 4584900, Fax: +30 210 4285679  
e-mail: [info@capitalship.gr](mailto:info@capitalship.gr) - [www.capitalship.gr](http://www.capitalship.gr)