

CAPITAL



M/T ATTIKOS

BUILT: 2005

CLASS: LRS

FLAG: LIBERIA



BUILDER: Baima Shipyard Xiabaishi Town, Fuan, Fujian - China

VESSEL PARTICULARS

Type of vessel:	OIL, PRODUCT & CHEMICAL TANKER, IMO III, +IA1 DOUBLE HULL
Summer deadweight:	12,000 MT
Summer draft:	7,485 m
Summer freeboard:	3,115 m
GRT / NRT	8,487 / 4,005
LOA:	134.85 m
Beam:	22.00 m
Depth:	10.60 m
Keel to mast:	38.00 m
SWL crane:	2 x 5 T



CARGO ARRANGEMENTS

Cargo / slop tanks:	10/2
Cargo capacity (98% ex slop tanks):	13,888.1 m ³
Slop tank capacity (98%):	494.552 m ³
Cargo tank coating:	Epoxy
Heating arrangement:	Stainless steel heating coils
Number of manifolds on each side:	3 x 10" cargo + 1 x 8" slop
Distance bow to mid-point manifold:	74.00 m
Distance main deck to center manifold:	1,140 mm
Distance manifolds to ship's rail:	2,400 mm
Natural segregation with double valves:	3
Stern line:	Yes
Cranes/SWL:	2 x 5 T



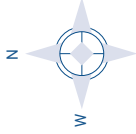
CARGO PUMPS

Cargo pump type(s):	Electric driven, screw type
Number of cargo pumps:	3
Capacity of cargo pumps:	3 x 500 m ³ / hr



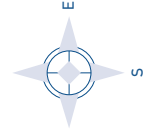
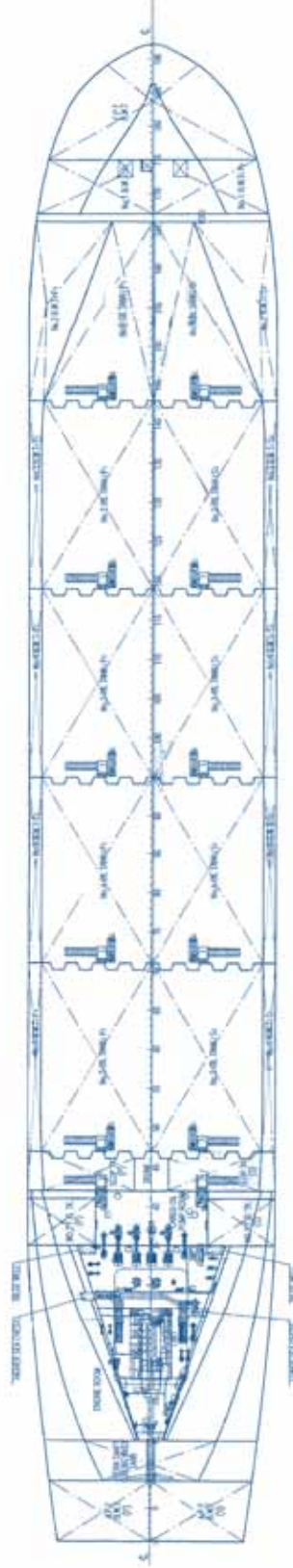
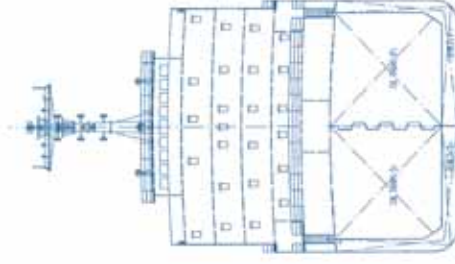
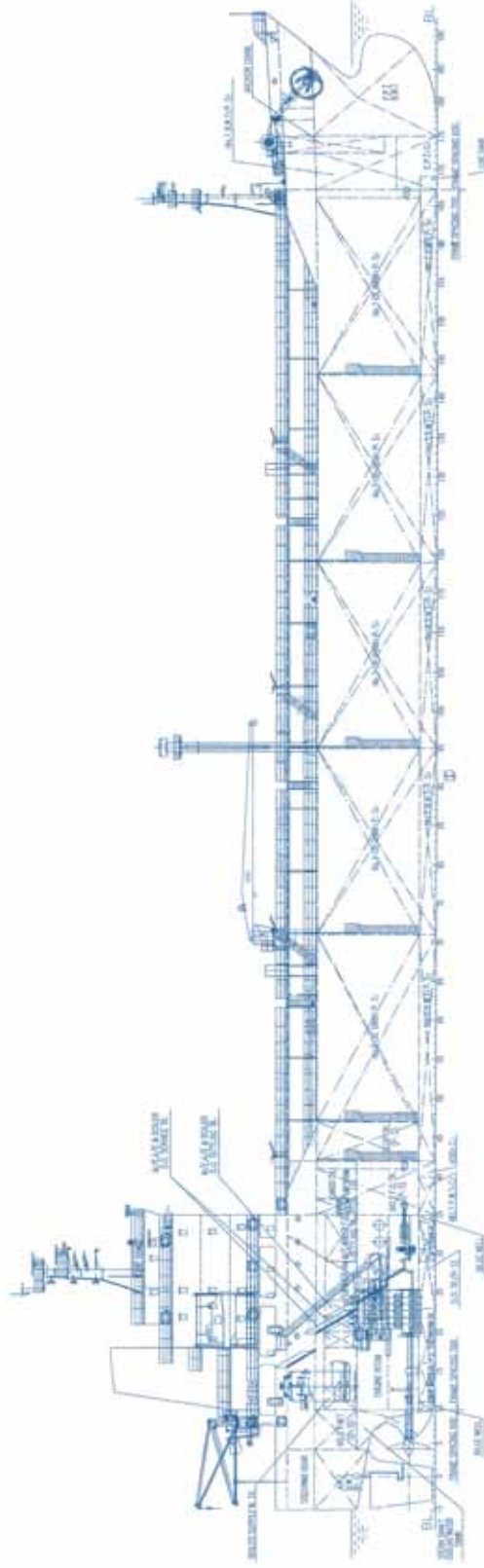
PROPULSION

Main engine:	MAN B&W 5S35MC 3,700 bhp @ 173 RPM
Generators:	3 X 250 kW



CAPITAL

SHIP MANAGEMENT CORP



M/T ATTIKOS

3, Iassonos St., Piraeus 185 37, GREECE
Tel: +30 210 4584900, Fax: +30 210 4285679
e-mail: info@capitalship.gr - www.capitalship.gr