

CAPITAL



M/T REBEL I

BUILT: 1991

CLASS: LRS

FLAG: LIBERIA



BUILDER: Halla Engineering and Heavy Industries, Ltd - S.Korea

VESSEL PARTICULARS

Type of vessel:	OIL, PRODUCT & CHEMICAL TANKER, IMO III, DOUBLE HULL, ESP, LMC, IGS, UMC, SHIPRIGHT (SCM)
IMO No:	8913576
Summer deadweight:	47,094 MT
Summer draft:	12.205 m
Summer freeboard:	5.825 m
GRT / NRT:	28,223 / 13,568
LOA:	183.20 m
Beam:	32.20 m
Depth:	18.00 m



CARGO ARRANGEMENTS

Cargo / slop tanks:	8/2
Cargo capacity (98% ex slop tanks):	54,079 m ³
Slop tank capacity (98%):	1,197 m ³
Cargo tank coating:	Epoxy
Heating arrangement:	Heat exchangers
Number of manifolds on each side:	4 x 14"
Distance bow to mid-point manifold:	90.3 m
Distance main deck to center manifold:	2,000 mm
Distance manifolds to ship's rail:	4,600 mm
Natural segregation with double valves:	4
Cranes/SWL:	1 x 15 T

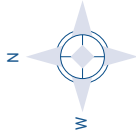


CARGO PUMPS

Cargo pump type(s):	Framo
Number of cargo pumps:	8 + 2
Capacity of cargo pumps:	8 x 850 m ³ / hr & 2 x 300 m ³ / hr

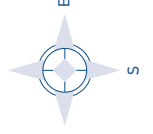
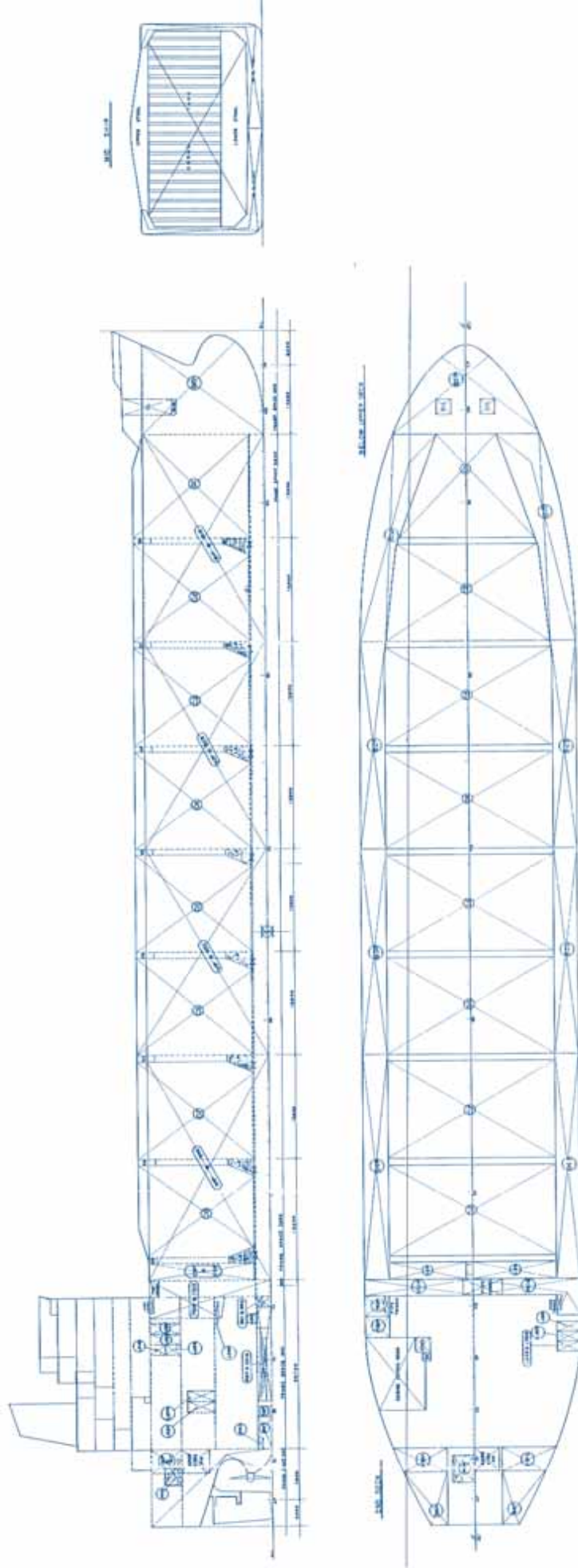
PROPULSION

Main engine:	MAN B&W 6S50MC, 9,135 kW @ 117 RPM
Generators:	3 x 662 kW



CAPITAL

SHIP MANAGEMENT CORP



M/T REBEL I

3, Iassonos St., Piraeus 185 37, GREECE
Tel: +30 210 4584900, Fax: +30 210 4285679
e-mail: info@capitalship.gr - www.capitalship.gr